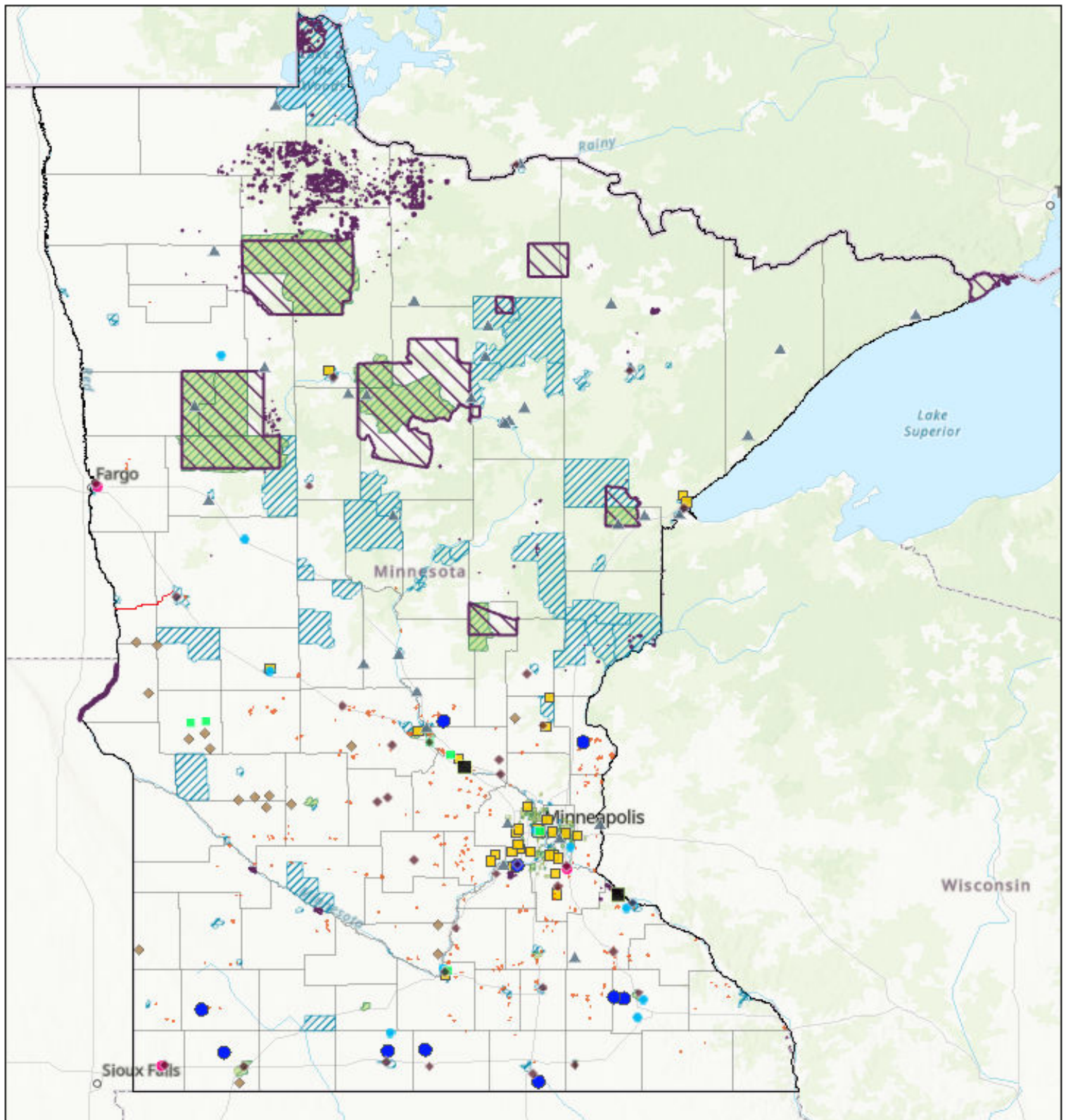


# Minnesota Climate Technologies EJ Map



- |  |   |
|--|---|
| ◆ Anaerobic Digesters                        | ● Waste Resource Recovery Facilities                              |
| ◆ Manure Digesters                           | ■ Data Centers  |
| ■ Green Hydrogen and Ammonia Projects        | — Midwest Carbon Express Pipeline (MN Northern Section)           |
| ■ Nuclear Power Plants                       | <i>Environmental Justice Areas (as defined by state statutes)</i> |
| ● Sustainable Aviation Fuel (SAF) Facilities | ▨ Census and state Tribal areas                                   |
| ▲ Biomass Incinerators                       | ■ Over 40% limited English proficiency                            |
| ● Battery Storage Projects                   | ■ Over 40% people of color  |
| ■ Large-scale Solar Farms                    | ▨ Over 35% under 200% federal poverty level                       |



## ■ Green Hydrogen and Ammonia Projects

Status: The only two operational projects in Minnesota are the WCROC Renewable Hydrogen and Ammonia Plant in Morris and CenterPoint Energy's downtown Minneapolis green hydrogen pilot. The remaining projects are proposed, except for the Xcel Wind-to-Ammonia project which was funded as part of the Heartland Hydrogen Hub and the current status is unknown. Details on green hydrogen and ammonia projects are from online news articles as of June 30, 2025.

## ■ Nuclear Facilities

Data from [Xcel's webpage](#) on nuclear facilities in Minnesota.

Status: Both nuclear facilities in MN are operational.

## ● Sustainable Aviation Fuel (SAF) Facilities

Status: All three SAF facilities are proposed to date based on online news articles.

## ▲ Biomass Incinerators

Data from Minnesota Department of Natural Resources, [Minnesota Woody Biomass Facility Directory](#) (Oct 2008).

Status: All facilities are assumed operational if sawmills are in the same location and still open.

## ◆ Anaerobic Digesters

Data from [EPA Excess Food Opportunities Map](#) and [EPA Power Plants and Neighboring Communities](#).

Status: All facilities mapped are operational.

### ◆ Manure Digesters (subset of Anaerobic Digesters)

Data from Minnesota Pollution Control Agency, Feedlot Program staff.

Status: All facilities mapped are operational.

## ● Battery Storage Projects

Data from Minnesota Public Utilities Commission via Minnesota ArcGIS Online Web App and Minnesota Department of Commerce, [Energy Environmental Review and Analysis \(EERA\) Project Search](#).

Status: All projects are in the permitting process, except the Lake Wilson Solar BESS Project which is permitted.

## ■ Large-scale Solar Farms

Data from the U.S. Geological Survey (USGS) United States Large-Scale Solar Photovoltaic Database (USPVDB).

Status: All projects mapped are operational as of the last update in the third quarter of 2023.

## ● Waste Resource Recovery Facilities

Data from the Minnesota Resource Recovery Association, [Facilities webpage](#).

Status: All facilities mapped are operational.

## ■ Data Centers

Data from [Data Center Map](#).

Status: Current status of mapped data centers is unknown based on available data, although most are not yet operational.

## — Midwest Carbon Express Pipeline (MN Northern Section)

Data from Minnesota Department of Commerce, accessed via Minnesota ArcGIS Online Web App.

Status: The Otter Tail to Wilkin Carbon Dioxide Pipeline Project was issued a route permit by the Minnesota Public Utilities Commission in February 2025.

## Environmental Justice Areas

Data from the [Minnesota Pollution Control Agency](#) based on results from the 2018-2022 American Community Survey.

▮ Census and state Tribal areas

■ Areas where at least 40% of population has limited English proficiency

■ Areas where at least 40% of population is people of color

▨ Areas where at least 35% of households have incomes below 200% of the federal poverty level

Note: Status is current as of June 2025 unless otherwise stated.